



Accelerate Your

WIDE  
FORMAT  
Color Print Production





# WIDE FORMAT Color Printing

## Has Never Seen Production Like This

### LET YOUR PRODUCTIVITY SOAR

The KIP Color 80 print system is designed for printing professionals who require high speed production of large color display graphics and business communications. The system is a comprehensive solution for brilliant wide format color imaging; spanning the full spectrum of applications from posters, signs, and photo enlargements to technical document printing — with maximum quality and performance.

The KIP Color 80 print system delivers high-speed on demand printing, precise imaging, and bold, expressive color output.

### HIGH QUALITY IMAGES

- Odorless LED full color CMYK print system
- High-resolution output is true 600 x 600 dpi
- Dry Toner system produces stable, lightfast, waterproof images
- Advanced color management features
- Automatic density controls ensure color consistency

### MAXIMUM PRODUCTION

- Constant production speed regardless of image complexity
- Output is ready for finishing immediately – no drying time
- Production class print server provides fast color file processing
- Four online media decks with on-the-fly roll changing
- Quick toner replacement via high production cartridges

### RANGE OF APPLICATIONS

- Web & PC based production printing applications
- Wide range of media types to extend application versatility
- Print from virtually any application via certified drivers
- Print, copy and scan wide format documents with a single system



**2,000 + SQUARE FEET**

**15,000 + SQUARE FEET**

**PRODUCTION PER HOUR**

**PRODUCTION PER DAY**



# Display Graphics & Business Communications

The KIP Color 80 system produces lightfast; UV-proof prints which not fade or exhibit color deterioration from exposure to light. Colorful banners, bulletins, and signs posted in hallways or placed in windows attract attention while large, full color business-style graphics deliver the right message at meetings, sales presentations, and legal briefs. KIP Color 80 prints are ideal for most applications because of their ability to deliver high resolution image quality at production print speeds with low operational costs.



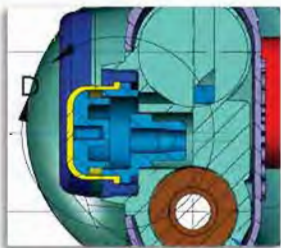
## DISPLAY GRAPHIC CREATION

- Commercial Printing
- Education
- Gaming Industry
- Entertainment
- Hotel & Hospitality Industry
- Beverage/Food Distributors
- Digital Proofing
- Exhibition
- Retail POP
- Litigation Graphics
- Graphic Arts
- Corporate CRD's
- Healthcare



## Technical Documents

As traditional technical documents and creative applications converge, wide format document production requirements have become more diversified. These documents encompass the full spectrum of color 3D renderings, graphical inlays, exploded view schematics, technical diagrams, manufacturing plans, architectural renderings and geographical maps. The KIP Color 80 enables business professionals to effectively convey ideas and information by leveraging visual appeal and technical accuracy.



Color CAD



Mapping



Architectural Design



Mark-Up

## Advanced Technology

Wide format prints increasingly rely on color data to quickly convey important information. The KIP Color 80 addresses this need by efficiently producing wide format color documents at full speed, regardless of image complexity and with the quality advantages of true CMYK dry toner printing. This versatile system is designed to meet communication requirements by supporting a wide variety of media types and sizes to create exactly the desired result for any application.

### ACCELERATED PRODUCTION

KIP Color 80 excels in speed and quality for cost effective color print production and eliminates time consuming make ready and press setup. With the ability to produce over 300 full color poster sized images per hour, it is the single most productive wide format LED color printer in the world. High demand printing and long unattended runs are made possible via four integrated media roll decks and an integrated stacking system.



### POWERFUL MULTITHREAD PROCESSING

The KIP Color 80 Server features an incredibly powerful processing system that takes full advantage of multithreading technology. It provides the strength to tackle even the most demanding print, copy & scan jobs, regardless of image complexity, with ease and finesse while maintaining constant production speed.

### KIP Color 80

#### Traditional RIPs





## DRY TONER PRINTING

**Lightfastness:** All images generated by the KIP Color 80 system are fully lightfast, meaning that they will not fade or exhibit color deterioration from exposure to light over extended periods.

**Waterproof:** The CMYK dry toner system employed by the KIP Color 80 produces 100% waterproof documents that are suitable for outdoor applications.



## Waterproof Dry Toner System

# CMYK

## MEDIA VERSATILITY

The KIP Color 80 supports a broad selection of media types for specific applications. Compatible media includes standard bond, fluorescent and photo gloss paper; technical and graphic vellums and backlight films; indoor/outdoor banner material; billboard blueback and self-adhesive substrates. In addition, the KIP Color 80 system handles extended paper weights from 18 to 40lb. bond and 3 to 4mil films to further extend application versatility.



## COPYING AND SCANNING

The KIP Color 80 provides efficient, high speed hard-copy reproduction workflow. Exceptional image quality is achieved through true 600 x 600 dpi optical resolution via an integrated KIP scanner with advanced camera based optics and delicate original transport mechanics for pixel-perfect images.

Best in class productivity is achieved from advanced CCD image capture and new KIP Tru•Speed Technology for high speed throughput without delays. World-class flexibility is delivered via the ability to scan face up or face down and scan thick mounted originals and single sheets of paper from a single unit.

## KIP 2300 High Productivity Scanner

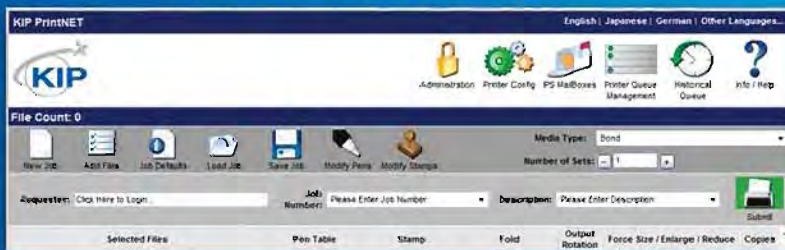




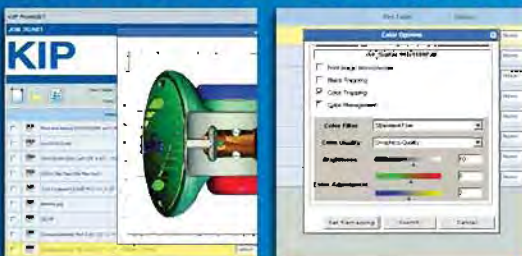
# KIP Color Print Management Software

KIP Color 80 systems include powerful print management applications that can be accessed from an unlimited number of seats. KIP PrintNET is a full featured web based viewing, printing and print management application that utilizes standard browsers to print to the KIP Color 80 via a corporate intranet or over the internet. Additionally, KIP Request is a PC based printing application provided to submit jobs to FTP sites and print via networks with the same powerful feature set.

## Icon Based Print Management



## KIP Color 80 Web-Based Viewing & Printing



## PC & WEB BASED VIEWING

- Ultra fast processing
- Accurate imaging (WYSIWYP)
- Custom image placement
- Full image preflight
- Color filter controls



## PC & WEB BASED PRINTING

- Print full job sets from anywhere
- Unlimited number of files
- Text & image stamping
- Browser independent
- Print multi page files
- Batch file conversion



## TOTAL COLOR PRINT MANAGEMENT

The KIP Color RIP provides color imaging professionals with the necessary tools to maximize output and quality while limiting the time invested in producing prints with superb color accuracy. KIP Color RIP delivers advanced color management with integrated support for ICC profiles. KIP Color RIP software provides powerful quality control features, image editing capabilities, advanced image paneling, nesting of images for optimum media usage and much more.

### KIP Color 80 Advanced Print Management



## VARIABLE DATA PRINTING (VDP)

Widely available VDP software applications enable the customization of documents via digital print technology to deliver unique messages to each customer. In wide format color, VDP is mainly used for retail merchandising applications such as promotions, POP displays, signage and posters that require some level of customization related to pricing or content. VDP technology combined with the production power of the KIP Color 80 ensures VDP operations are completed quickly and profitably.



## CERTIFIED APPLICATION DRIVERS

KIP application drivers support 32 & 64 bit printing features including set collation, fast spooling for multiple copies or sets, data tracking for job accounting & media selection.

- Microsoft Windows 7 Certified 32 & 64 bit print drivers
- Drivers for AutoCAD versions up to 2011
- Citrix ready



## TRUE PRINT COST MANAGEMENT

The KIP Color 80 cost calculator supplied in Microsoft Excel format is provided to help you easily generate real-time accounting reports to accurately invoice or cross charge departments, projects or clients at designated intervals. The cost calculator quickly generates reports based on specific date ranges and job information to expedite your billing or tracking procedures.

The KIP Color 80 produces various types of prints from line drawings and maps to renderings and photographs. Print costs vary due to toner coverage, media type and image size; retained by the calculator as detailed print logs. This enables users to quickly and easily create pre-defined report templates based on toner & media use, square footage, service cost, job/user name and last job.

## KIP COLOR 80 E-SYSTEMS REPORTS

KIP Color 80 reports detailing total system usage are delivered via email on demand or at designated intervals to system administrators. Recipients may have the email sent to a choice of PC, laptop or smart phone!

- Generate highly accurate reports on demand
- Create reports based on time or date range
- Create reports based on projects and users
- Manage inter-departmental expenses
- Reports provided in Microsoft Excel format





# KIP Premier Performance & Build Quality

As a world leader in wide format document production technology, KIP is committed to providing the highest value standards by combining the best in hardware and software technology to create superior products at affordable prices. KIP systems are quality engineered for production class operation and reliability. State-of-the-art printing technologies and advanced self diagnostic systems maintain system productivity to ensure maximum uptime. We differentiate our products by integrating environmental benefits such as energy efficiency, emissions reduction and the ability to recycle supply containers, to deliver an improved operational experience.

## KIP PRINTERS AND SYSTEMS FEATURE THESE EARTH CONSCIENTIOUS ASPECTS

- Energy Star Qualified
- ROHS Compliancy
- ISO 14001 Standards
- Ozone Emissions Filters
- UL/UL-C Approved
- Organic, Recyclable Photoreceptors
- Recyclable Toner Containers
- Prints on Recycled Paper
- Automatic Image Rotation and Media Selection Ensure Minimal Paper Waste



U.S.A.  
 (800) 252-6793  
 info@kipamerica.com  
 www.kipamerica.com

CANADA  
 (800) 653-7552  
 info@kipcanada.com  
 www.kipcanada.com

For additional product specifications, please contact your Authorized KIP Dealer.

## THE COLOR OF KIP IS GREEN

KIP is committed to product designs that promote environmental health and sustainability. Our goal is to consistently improve and refine the technologies in KIP products to keep our planet green.

The greatest environmental impact of KIP products is through the actual operation of our products and solutions. Our goal is to improve the customer experience by integrating environmental considerations into our business strategy – resulting in superior products.



## ENVIRONMENTAL RESPONSIBILITY

